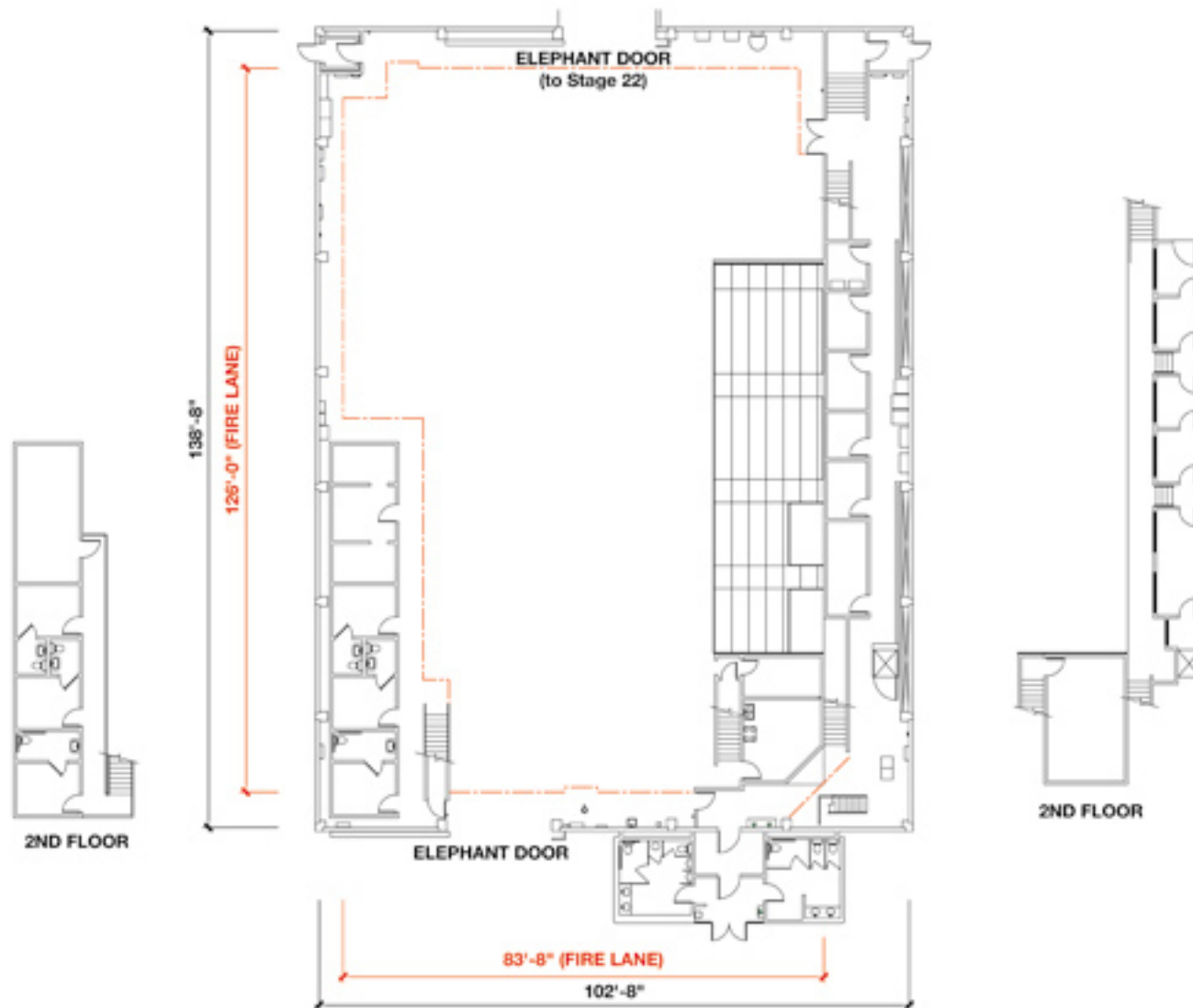


Stage 21



AUDIENCE RATED A-3
MAXIMUM CREW & AUDIENCE = 299

STAGE SIZE:
(102' x 138') 14,076 sq. ft.

LIVE LOAD CAPACITY OF FLOOR:
Wood floor over concrete

HEIGHT:
35' to the permanents with catwalks above

BUILT-IN ROOMS:
6 Dressing Rooms each with private restroom (two handicapped), Hair/Make-up Room, 2 Wardrobe Rooms, 2 Prop Rooms, 2 Set Dressing Rooms, 2 Dimmer Rooms, 2 Sound Booths, Camera Room, 2 AD Rooms, Green Room, Electric Room, Grip Room, Full Crafts Service area

AUDIENCE CAPACITY:
Approx. 198

FALL PROTECTION:
100% Tie-off Horizontal Lifeline system

ELECTRICAL:
D.C. Lighting: 4800 amps / 120 volts
A.C. Prod. Lighting: 4350 amps / 120 volts
Basic House/Building Power:

600 amps / 120/240 volts
Single Phase

AC Spider: 225 amps / 120/240 volts
Single Phase from Basic House Power

Power for Equipment: 3 Phase:
350 amps / 240 volts*
*Local 40 tie-in required

ELEPHANT DOORS:
Two doors approximately:
16' Wide x 14' High (interior door)
18' Wide x 24' High

HVAC:
Silent air conditioning and heating

WATER:
On four perimeter walls
Sink on south wall
Full sink in Crafts Service Area

FOX STUDIOS
PRODUCTION SERVICES
310.369.2786 / 310.369.4231

™ & © 2004 Fox and its related entities. All rights reserved.



FOX STUDIOS
10201 W. Pico Blvd.
Los Angeles, California 90035
310.FOX.INFO / (f)310.969.0468
www.foxstudios.com