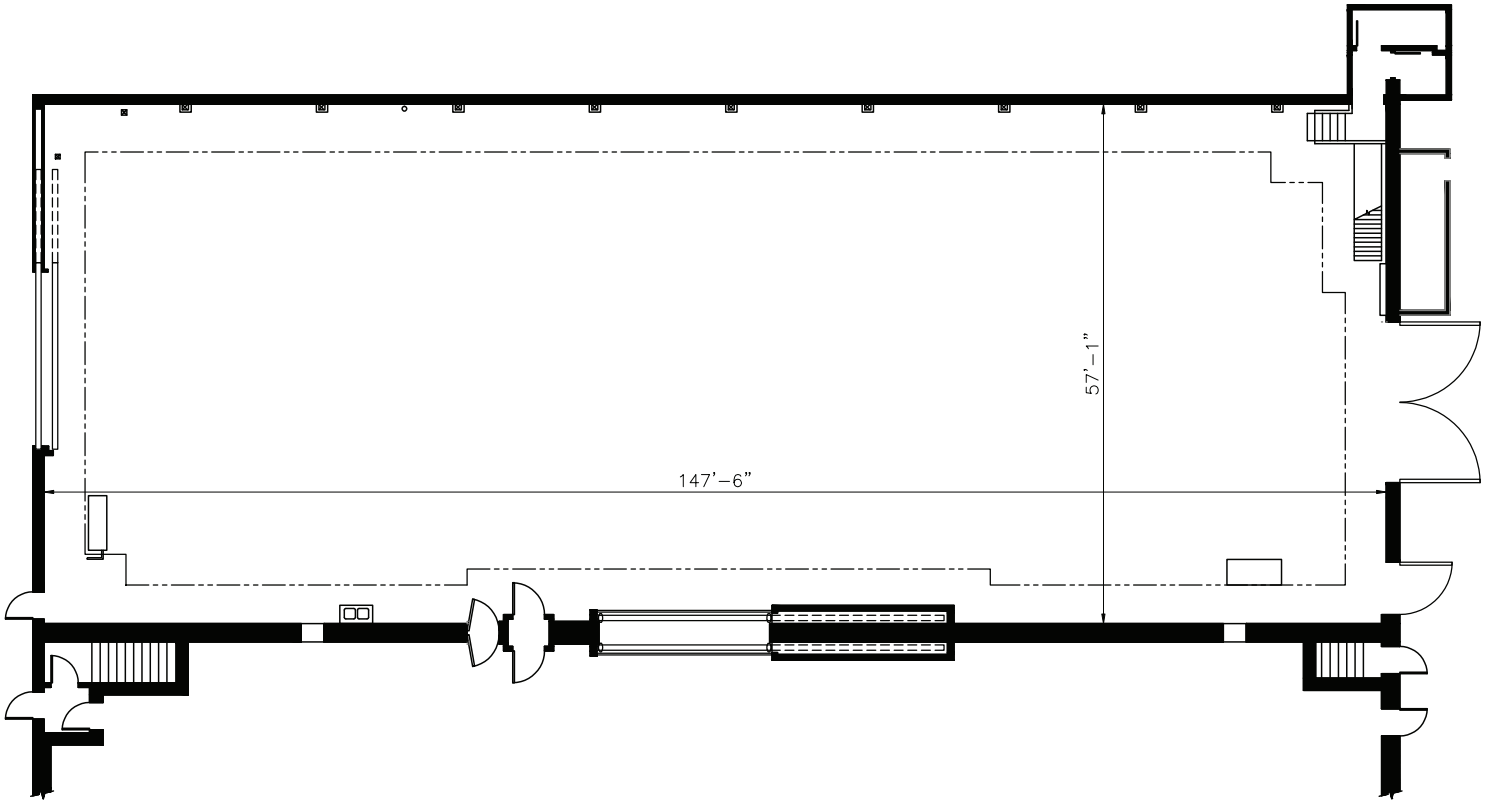


# STAGE 2

THE STUDIOS  
★★★★ at ★★★★★  
*Paramount*

## Floorplan



### Dimensions

<b>Width</b>	<b>57'-1"</b>
<b>Length</b>	<b>147'-6"</b>
<b>Height</b>	<b>26'</b>
<b>Square Feet</b>	<b>8,420</b>
<b>Door Height</b>	<b>21'</b>
<b>Max Weight Capacity</b>	<b>10,000bs</b>

### Previous Productions Shot on this Stage:

#### Movies

The Disorderly Orderly (1964)  
 The Patsy (1964)  
 Seven Days In May (1964)  
 Come Blow Your Horn (1963)  
 The Man Who Shot Liberty Valance (1962)  
 Breakfast at Tiffany's (1961)  
 One Eyed Jacks (1959)  
 The Joker Is Wild (1957)  
 Rock A Bye Baby (1957)  
 A Place In the Sun (1950)  
 The Heiress (1948)

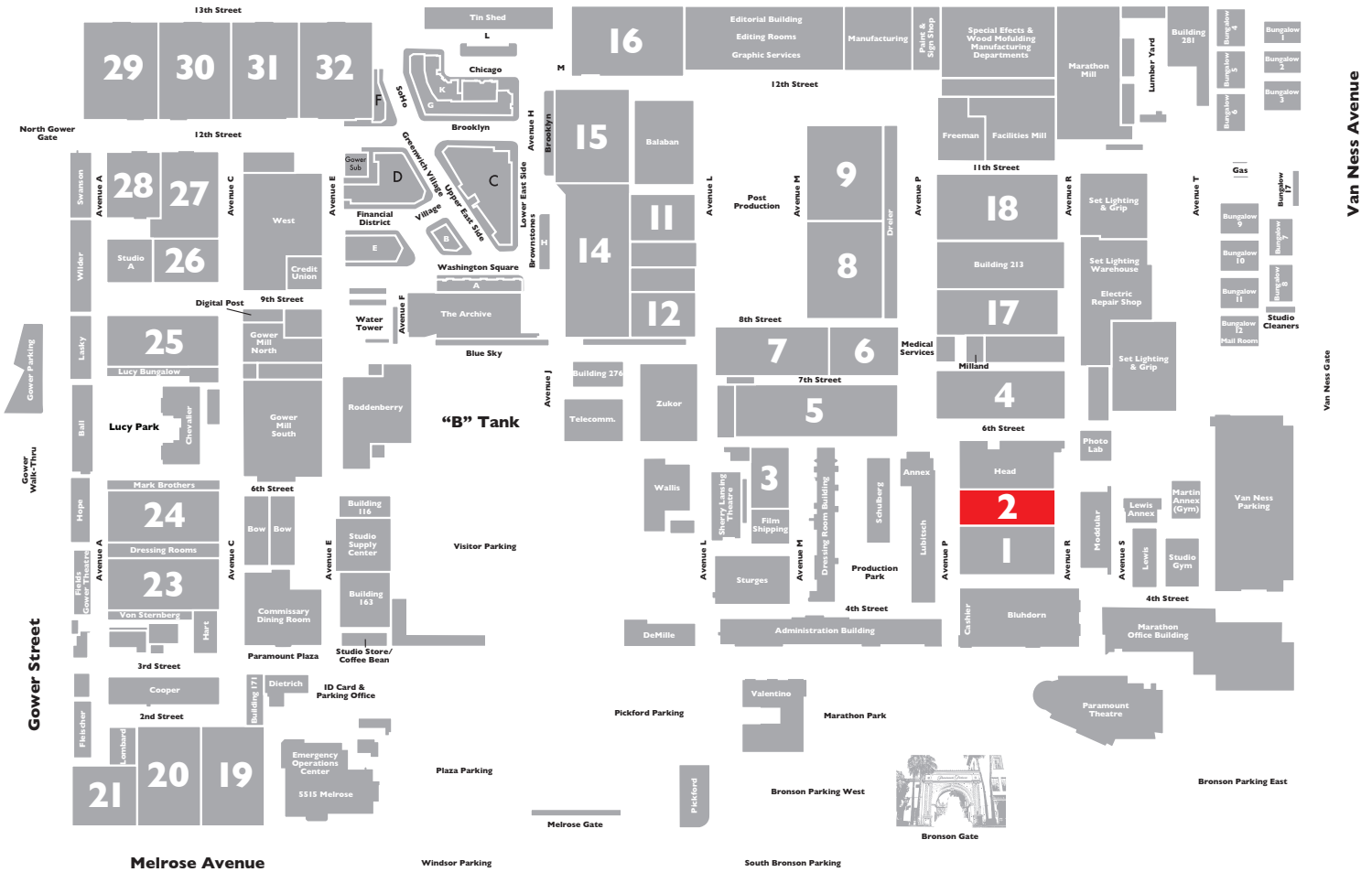
#### Television

MacGuyver  
 Moesha  
 Nip/Tuck

# STAGE 2



## Stage Location



## Specifications

<b>Power*</b>	<b>PLM Receptacle for Temp Power</b>
<b>HVAC</b>	<b>50T</b>
<b>Red Light Controlled</b>	<b>Yes</b>
<b>Heat</b>	<b>Hanging Heat</b>
<b>Utilities (Air at 90PSI)</b>	<b>G/W/A</b>
<b>Wi-Fi Internet Access</b>	

\*(IP2W fixed AC power (cam locks) available as 120/208V 3P4W)